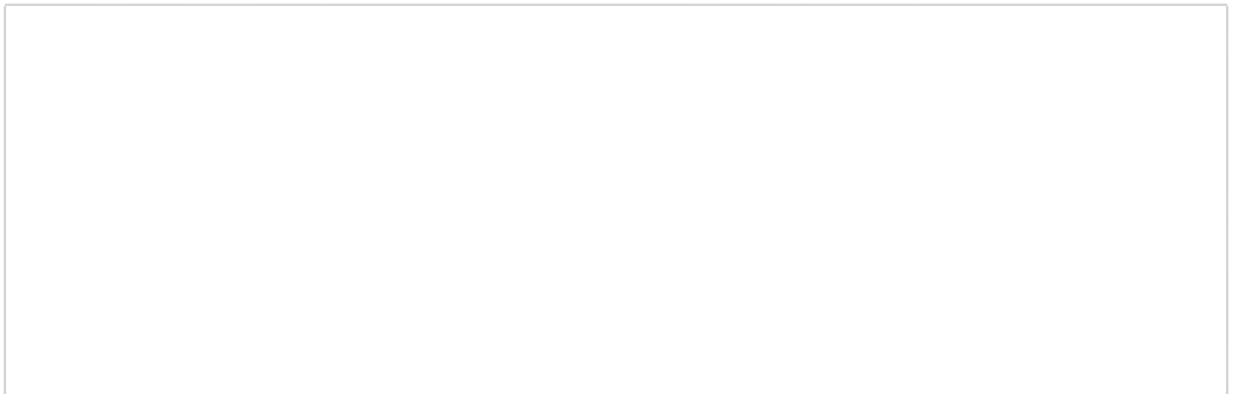


## Product Specification

MC-213x12W, MC-215x12W,  
MC-413x12W, MC-415x12W  
10/100M Dual TP Mediaconverter



### 1. Product Description

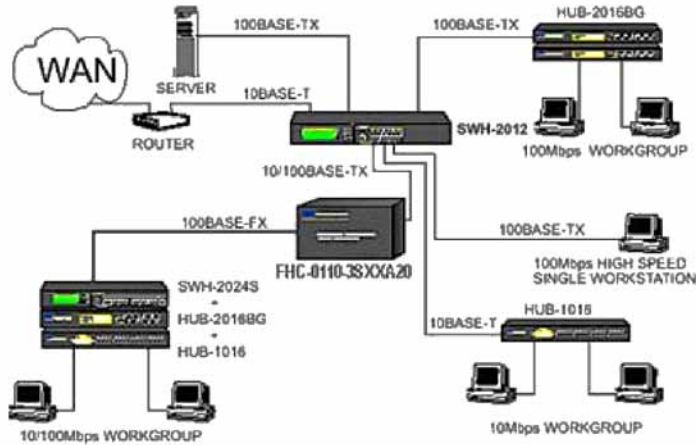
The MC-213x12W, MC-215x12W, MC-413x12W, MC-415x12W Series Media Converter are compact, cost-effective, low dissipative, high reliable device for converting data signal between 10/100 Base-Tx and 100 Base-Fx fast Ethernet bridging. The 10/100M Media Converter is a compact product housed in a metal case to fulfil, as do all MC-213x12W, MC-215x12W, MC-413x12W, MC-415x12W Series Converters, comply with FCC emission standards. The MC-213x12W, MC-215x12W, MC-413x12W, MC-415x12W Series consist of a series of 10/100Base-TX to 100Base-FX media converters. This compact size, switch based converter function just like a 2 port switch rather than a traditional converter. User now may upgrade or extend their existing 100Base-TX or even 10Base-T network into fiber network easily.

All MC-213x12W, MC-215x12W, MC-413x12W, MC-415x12W Series are fully compliant with IEEE802.3 and 802.3u standards. The RJ45 (STP) port of all MC-213x12W, MC-215x12W, MC-413x12W, MC-415x12W Series support auto-negotiation functions, provide a maximum bandwidth of up to 200Mbps (100M full duplex) or up to 20Mbps (10M, full duplex) for distances of up to 2Km - when using multimode fiber cable; or up to 120Km - when using singlemode fiber cable. Installation and operation of the MC-213x12W, MC-215x12W, MC-413x12W, MC-415x12W Series is simple and straightforward. In addition, built-in power supplier eliminate the need of additional power adapter.

The MC-213x12W, MC-215x12W, MC-413x12W, MC-415x12W Series works well with 2U Chassis and MC-213x12W, MC-215x12W, MC-413x12W, MC-415x12W series slide-in converters as well and also complements any other products featuring a 100Base-FX interface.

## A-GEAR World Wide Manufacturing

### 2. Application



### 3. Specification

Standards	IEEE 802.3 10 Base-T IEEE 802.3u 100 Base-TX/FX
Interface	One 100Base-FX Multimode or Single mode: (FO-SC,ST or MT-RJ) Two :RJ-45
Switching Method	Store and forward
Packet Buffer	256KB
MAC Table	8K
Operating Environment/Power	Operating Temperature: 0°C ~ +70°C Storage Temperature: -40°C ~ +85°C Humidity: 5-90% non condensing Ext. Power Supply, DC 5V, 1A
LED	TX1/SPD, TX2/SPD, TX1/FDX, TX2/FDX, LINK, POW,
Dimensions	Size: 122 x 86 x 22 mm (W x D x H); Weight: 630 g (Net Weight)
Safety Standards	Electrical: UL , CSA; EMI: FCC Part 15 Class B, CE

### 4. Typical Optical Power Budget

TYPE	MC-213x12W	MC-215x12W	MC-413x12W	MC-415x12W
Connector	1310	1550	1310	1550
Distance	20km	20km	40km	40km
Min TX Power	(-18dBm)	(-18dBm)	(-5dBm)	(-5dBm)
Max TX Power	(-7dBm)	(-7dBm)	(-0dBm)	(-0dBm)
Sensitivity	(-28dBm)	(-28dBm)	(-30dBm)	(-30dBm)
Link Dudget	10dB	10dB	25dB	25dB